



marbeiro

MATERIAIS DE CONSTRUÇÃO, LDA.

Potes



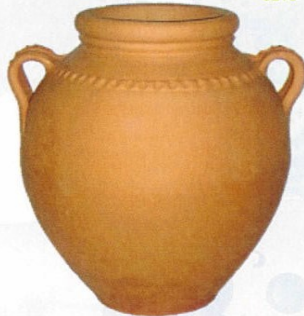
Poto Alentojano

Ref.	Alt.	Ø
6205	100	65
	75	65
	65	55
	55	45
	45	35
	35	30



Poto Alentojano Asas

Ref.	Alt.	Ø
6215	100	65
	75	65
	65	55
	55	45
	45	35
	35	30



Poto Grande

Ref.	Alt.	Ø
6200	100	65
	75	65
	65	55
	55	45
	45	35
	35	30



Poto 2 Frisos

Ref.	Alt.	Ø
3090	100	65
	75	65
	65	55
	55	45
	45	35
	35	30



Poto Inclinado

Ref.	Alt.	Ø
4200	50	40
	45	35
	40	30
	35	26
	30	22
	21	18
	18	15
	15	12
	12	11
	9	8



Poto Maluco

Ref.	Alt.	Ø
6800	74	43



Poto Picado

Ref.	Alt.	Ø
6800	74	43



Poto Lisa

Ref.	Alt.	Ø
3080	73	50
	60	43
	48	35
	40	31
	35	25
	31	20
	25	15
	22	12



Anfora Lisa

Ref.	Alt.	Ø
6190	105	45
	90	45
	70	40
	60	35
	50	35



Poto 7 Pugas

Ref.	Alt.	Ø
6235	105	65
	85	55
	65	45



Poto Alentejano Daltado Asas

Ref.	Comp.	Larg.
6220	65	55
	55	45
	45	35
	35	30
	25	20
	20	15

**Poto Alentejano Lombado**

Ref.	Alt.	Ø
6300	35	55
	30	45
	25	35
	20	30
	15	25

**Peça Fundo Mar Nº 6 Aberta**

Ref.	Alt.	Comp.
0026	27	75

**Peça Fundo Mar Nº 10 Aberta**

Ref.	Alt.	Comp.
0030	22	70

**Poto Novo Daltado**

Ref.	Alt.	Larg.
6310	65	60
	55	50
	45	40
	40	35
	35	30
	30	25
	25	20
	20	15

**Poto Alentejano Grande**

Ref.	Alt.	Ø
6210	110	55
	100	55
	90	55

**Peça Fundo Mar Nº 10 Aberta**

Ref.	Alt.	Comp.
0039	24	50

**Moranqueiro**

Ref.	Alt.	Ø
2290	70	70
	60	60
	50	50
	40	40
	30	30

**Anifora Bico Aberta**

Ref.	Alt.	Comp.
6320	34	80
	30	70
	26	60
	24	50
	22	40
	20	30

**Poto Aberto**

Ref.	Alt.	Comp.
2285	32	50
	26	40





Jarra Quadrada

Ref.	Alt.	Larg.
2560	80	36
	70	34
	60	32
	50	30



Poto Antigo

Ref.	Alt.	Ø
8015	140	68
	130	62
	110	55
	70	42



Caneca Antiga

Ref.	Alt.	Ø
8005	130	55
	100	43



Poto Redondo

Ref.	Alt.	Ø
6230	50	50
	45	45
	40	40
	35	35



Tainha Poto Antigo

Ref.	Alt.	Ø
8010	130	78
	110	66
	90	55



Vaso Grande Antigo

Ref.	Alt.	Ø
8000	70	70
	50	50



Tainha Moderna Antiga

Ref.	Alt.	Ø
8030	90	70
	80	62
	70	55



Poto Quadrado Antigo

Ref.	Alt.	Larg.
8025	120	50
	100	41



Poto Broxa e Tainha

Ref.	Alt.	Ø
8020	130	65
	100	54



Poto Alentejano Antigo

Ref.	Alt.	Ø
8035	130	90
	115	80
	100	70

Poto Novo Deitado 701-C

Ref.	Alt.	Larg.
6310	65	60
	55	50
	45	40
	40	35
	35	30
	30	25
	25	20
	20	15

**Anfora de Bico Aberta 701-C**

Ref.	Alt.	Comp.
6320	34	80
	30	70
	26	60
	24	50
	22	40
	20	30

**Bilha Jardim Barro Branco**

Ref.	Alt.	Comp.
5720	20	60
	19	55
	18	50
	17	45
	16	40
	15	35

**Anfora de Bico Aberta Barro Branco**

Ref.	Alt.	Comp.
6320	34	80
	30	70
	26	60
	24	50
	22	40
	20	30

**Poto Alentejano 701-C**

Ref.	Alt.	Ø
6205	100	65
	75	65
	65	55
	55	45
	45	35
	35	30

**Anfora Lisa 701-C**

Ref.	Alt.	Ø
6190	105	45
	90	45
	70	40
	60	35
	50	35

**Poto Alent. Deitado Asas Barro Branco**

Ref.	Comp.	Larg.
6220	65	55
	55	45
	45	35
	35	30
	25	20
	20	15

**Cesta Nova Barro Branco**

Ref.	Alt.	Larg.
6325	17	40
	15	35
	13	30

**Anfora Lisa 701-C**

Ref.	Alt.	Ø
6190	105	45
	90	45
	70	40
	60	35
	50	35

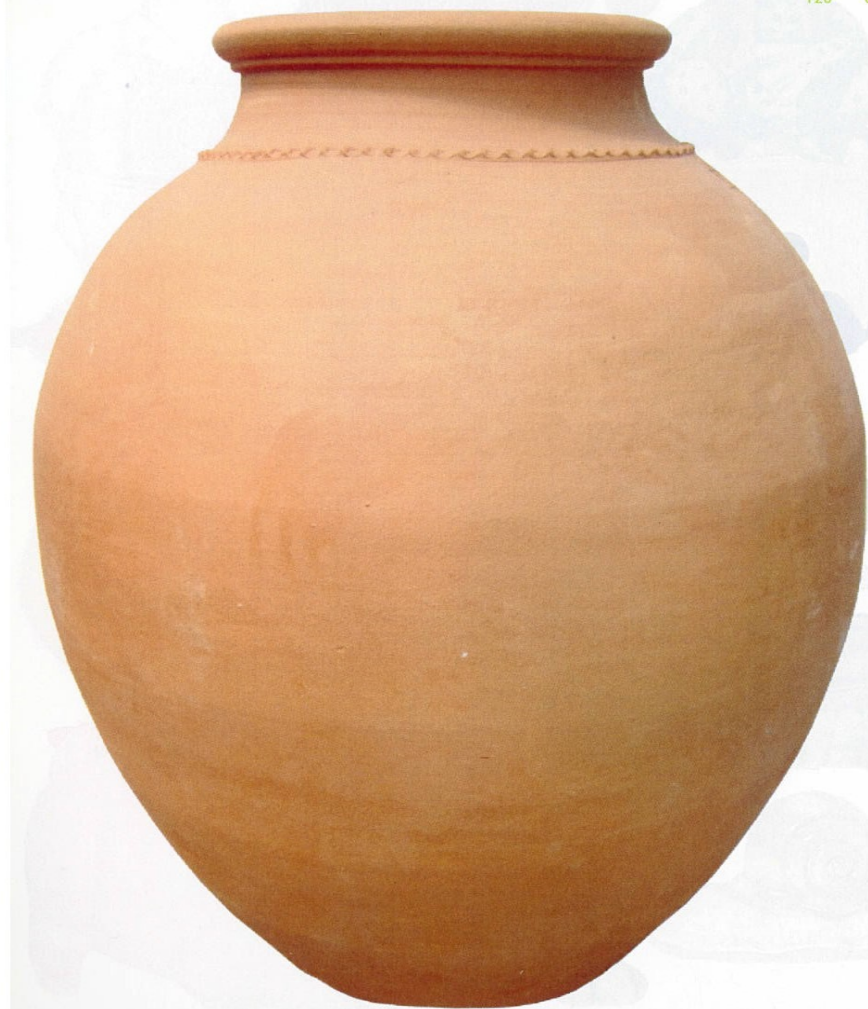
**Cântaro Barro Branco**

Ref.	Alt.	Ø
4570	50	32
	43	27
	34	23
	28	18

**Poto 2 Frazos Barro Branco**

Ref.	Alt.	Ø
3090	100	65
	75	65
	65	55
	55	45
	45	35
	35	30





Poto Alentejano Liso

Ref.	Alt.	Ø
6600	150	100
	140	95
	130	90
	120	85



Poto Alentejano Canelado

Ref.	Alt.	Ø
6605	150	100
	140	95
	130	90
	120	85



Vaso Grande Liso

Ref.	Alt.	Ø
6610	80	100
	70	100
	60	95



Vaso Recto

Ref.	Alt.	Ø
6625	80	90
	70	80

Vaso Grande Concretado

Ref.	Alt.	Ø
6615	80	100
	70	100
	60	95



Conjunto 3 Vasos Aro

Ref.	Alt.	Ø
6630	76	98
	70	80
	64	65



Vaso Gigante Envollecido

Ref.	Alt.	Ø
6620	90	90
	80	90
	70	85



Amostra de Barro